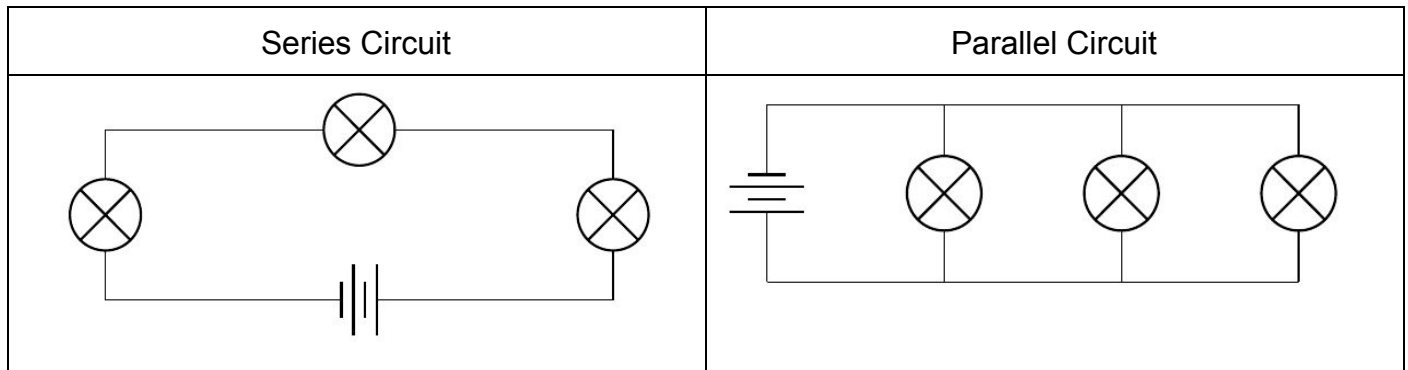
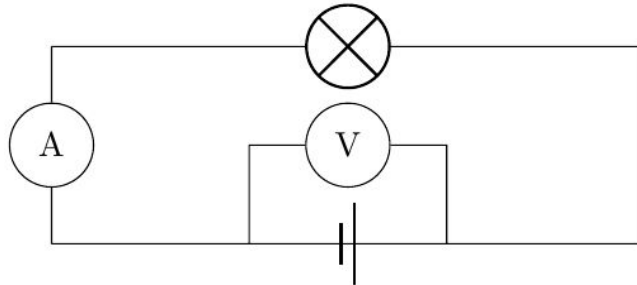


## Series and Parallel Circuits



An ammeter is placed in series, but the voltmeter is always placed in parallel to the battery (*do not worry about the arrow on each ammeter and voltmeter*):



Build the following circuits below in the given order:

Series circuit: a battery, an ammeter, an open switch, two light bulbs and a resistor.

Parallel circuit: a battery, an open switch to control all of the following: two light bulbs and a motor. Add a voltmeter to measure voltage (V) of the battery.